

# HIDDEN CREEK 6TH ADDITION

PLAT FILE No. \_\_\_\_\_

C.R. DOC. No. \_\_\_\_\_

**KNOW ALL MEN BY THESE PRESENTS:** That HC1, LLC, a Minnesota limited liability company, owner of the following described property situated in the County of Carver, State of Minnesota, to wit:

Outlot F, HIDDEN CREEK 5TH ADDITION

Has caused the same to be surveyed and platted as HIDDEN CREEK 6TH ADDITION, and does hereby dedicate to the public for public use forever the public ways and the easements for drainage and utility purposes as shown on this plat.

In witness whereof said HC1, LLC, a Minnesota limited liability company, has caused these presents to be signed by its proper officer this \_\_\_\_\_ day of \_\_\_\_\_, 201\_\_.

**HC1, LLC**

\_\_\_\_\_  
Alan Roessler, President

State of Minnesota  
County of \_\_\_\_\_

The foregoing instrument was acknowledged before me this \_\_\_\_\_ day of \_\_\_\_\_, 201\_\_ by Alan Roessler, President of HC1, LLC, a Minnesota limited liability company, on behalf of the company.

\_\_\_\_\_  
Notary Public \_\_\_\_\_ County, Minnesota  
My Commission Expires \_\_\_\_\_

**SURVEYORS CERTIFICATION**

I, Max L. Stanislawski, do hereby certify that this plat was prepared by me or under my direct supervision; that I am a duly Licensed Land Surveyor in the State of Minnesota; that this plat is a correct representation of the boundary survey; that all mathematical data and labels are correctly designated on this plat; that all monuments depicted on this plat have been, or will be correctly set within one year; that all water boundaries and wet lands, as defined in Minnesota Statutes, Section 505.01, Subd. 3, as of the date of this certificate are shown and labeled on this plat; and all public ways are shown and labeled on this plat.

Dated this \_\_\_\_\_ day of \_\_\_\_\_, 201\_\_

\_\_\_\_\_  
Max L. Stanislawski, Licensed Land Surveyor  
Minnesota License No. 48988

State of Minnesota  
County of Hennepin

This instrument was acknowledged before me this \_\_\_\_\_ day of \_\_\_\_\_, 201\_\_ by Max L. Stanislawski, a Licensed Land Surveyor.

\_\_\_\_\_  
(Signature)

\_\_\_\_\_  
(Printed Name)  
Notary Public \_\_\_\_\_ County, Minnesota  
My Commission Expires January 31, 202\_\_

**MAYER, MINNESOTA**

This plat of HIDDEN CREEK 6TH ADDITION was approved and accepted by the City Council of the City of Mayer, Minnesota, at a regular meeting thereof, held this \_\_\_\_\_ day of \_\_\_\_\_, 201\_\_, and is in compliance with the provisions of Minnesota Statutes, Section 505.03, Subd. 2. All monuments will be set as specified by the City Council and as stated on this plat, according to Minnesota Statute, 505.02, Subd. 1.

CITY COUNCIL OF THE CITY OF MAYER, MINNESOTA

By: \_\_\_\_\_ By: \_\_\_\_\_  
Mayor Clerk

**COUNTY SURVEYOR, Carver County, Minnesota**

Pursuant to Chapter 395, Minnesota Laws of 1971, this plat has been approved this \_\_\_\_\_ day of \_\_\_\_\_, 201\_\_.

By: \_\_\_\_\_  
John E. Freemyer, Carver County Surveyor

**COUNTY AUDITOR/TREASURER, Carver County, Minnesota**

I hereby certify that taxes payable in \_\_\_\_\_ and prior years have been paid for land described on this plat. Dated this \_\_\_\_\_ day of \_\_\_\_\_, 201\_\_.

By: \_\_\_\_\_  
Laurie Davies, County Auditor/Treasurer

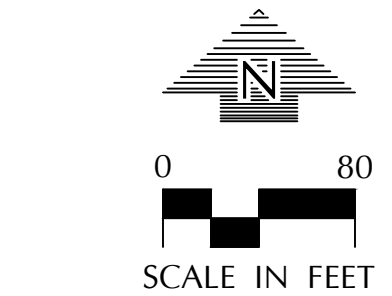
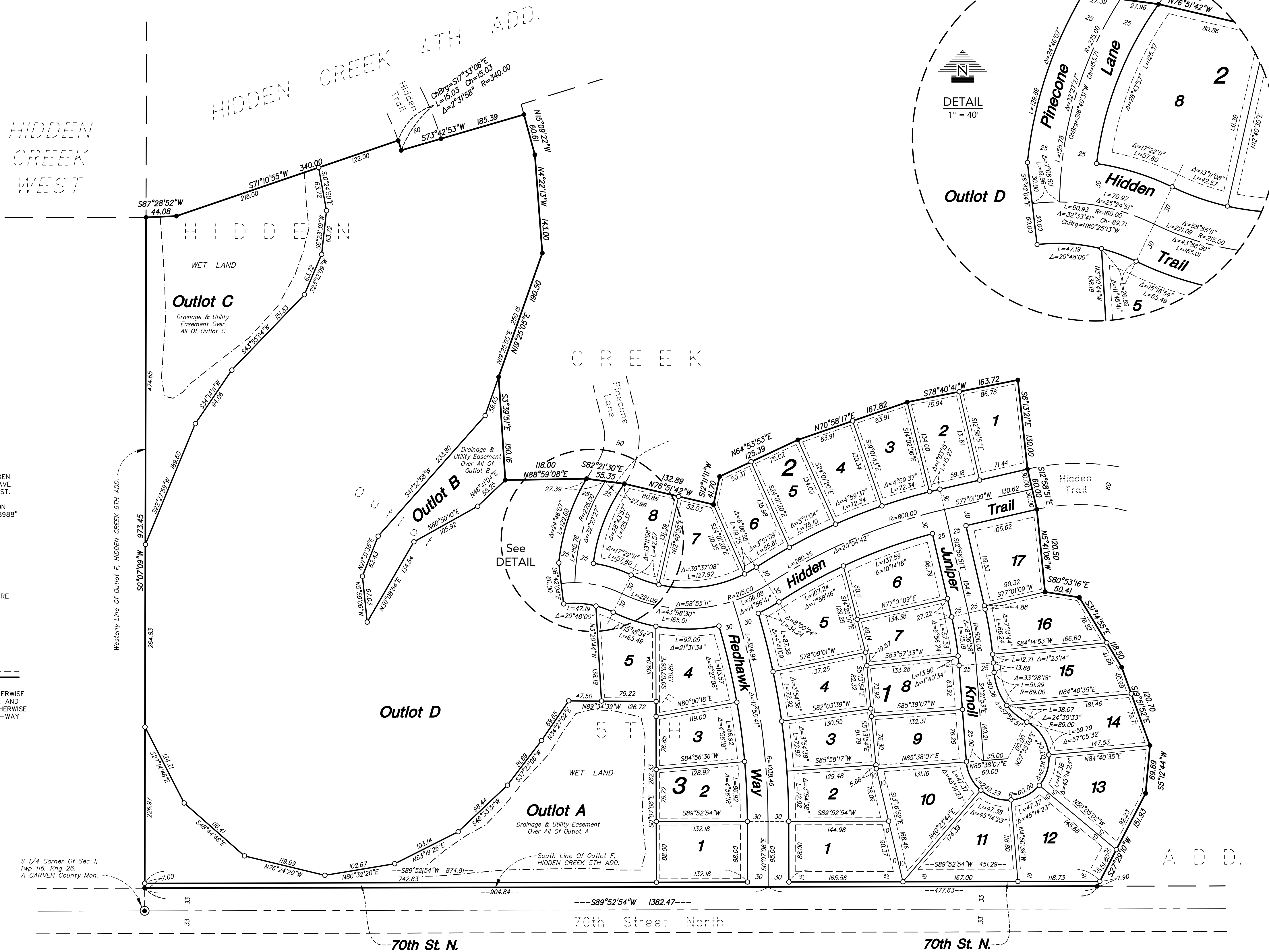
**COUNTY RECORDER, Carver County, Minnesota**

I hereby certify that this plat of HIDDEN CREEK 6TH ADDITION was filed this \_\_\_\_\_ day of \_\_\_\_\_, 201\_\_, at \_\_\_\_\_ o'clock \_\_\_\_M. as Document No. \_\_\_\_\_.

By: \_\_\_\_\_  
John E. Freemyer, County Recorder

# HIDDEN CREEK 6TH ADDITION

PLAT FILE No. \_\_\_\_\_  
C.R. DOC. No. \_\_\_\_\_



THE SOUTH LINE OF OUTLOT F, HIDDEN CREEK 5TH ADD. IS ASSUMED TO HAVE A BEARING OF SOUTH 89°52'54" WEST.

○ DENOTES 1/2 INCH X 14 INCH IRON MONUMENT SET, MARKED "RLS 48988"

● DENOTES IRON MONUMENT FOUND

